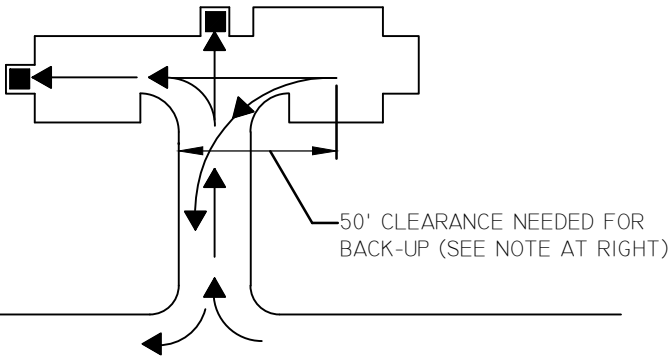
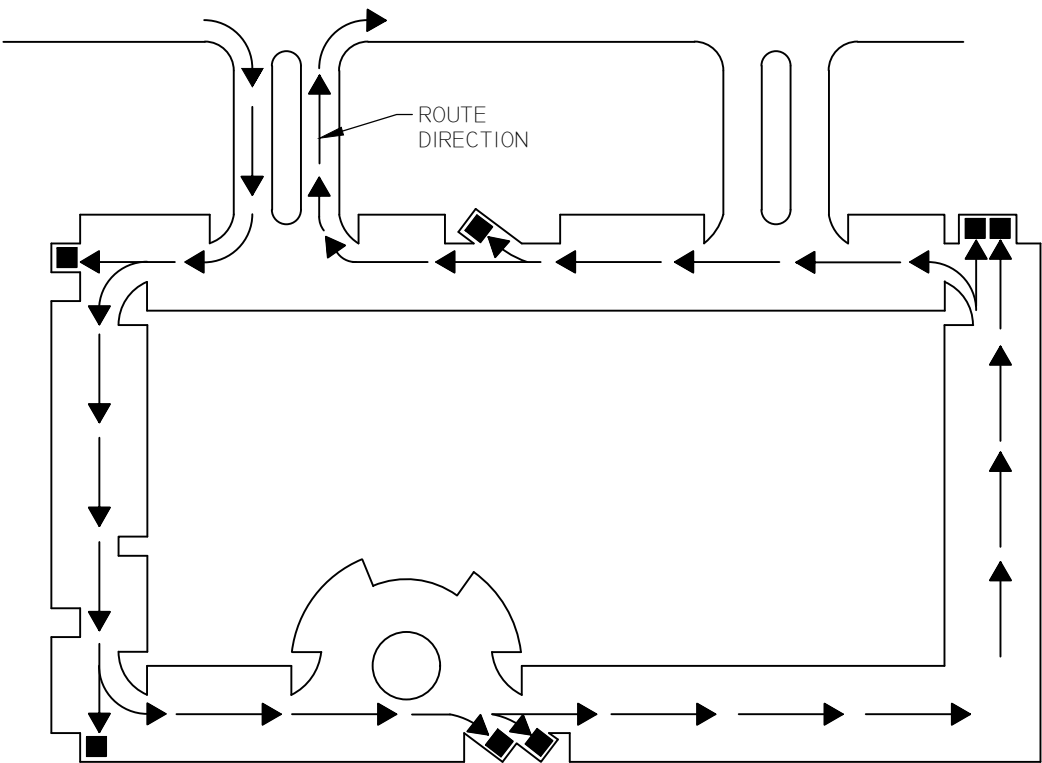


PLEASE NOTE
SOLID WASTE VEHICLES
WEIGH APPROX. 29 TONS
WHEN FULL. DRIVEWAYS
MUST BE BUILT TO SUPPORT
THIS WEIGHT WITHOUT
DAMAGE TO DRIVE.

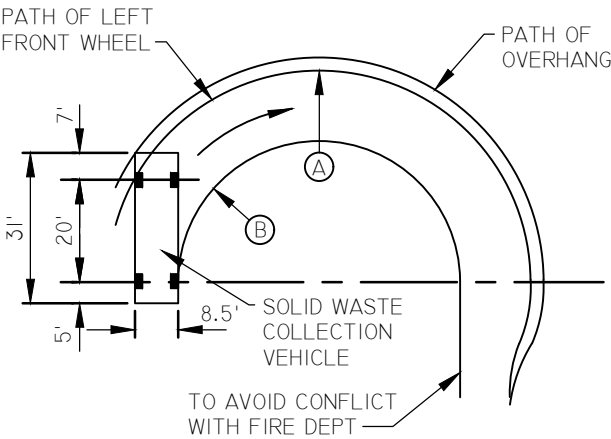
HAMMER HEAD DRIVE



PUBLIC ROADWAY



A TYPICAL SOLID WASTE COLLECTION ROUTE



- (A) 55' OUTER TURNING RADIUS
(B) 35' INNER TURNING RADIUS

CLEARANCE REQUIREMENTS

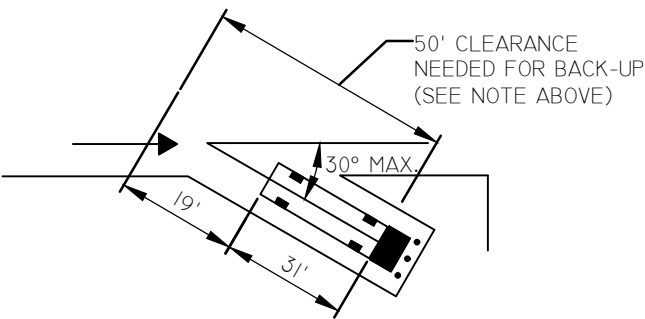
NOTES

1. ALL CURBS ARE TO BE ALIGNED ON THE OUTSIDE OF ENCLOSURE WALLS. THE CURBS SHALL NOT INTERFERE WITH THE ROUTE OF THE SOLID WASTE COLLECTION VEHICLE.
2. IN GENERAL TERMS, ALL SOLID WASTE COLLECTION ROUTES SHALL MEET DOUGLAS COUNTY DESIGN CRITERIA AND IMPROVEMENT STANDARDS (STREET WIDTHS, TURNING RADII) IN A MANNER THAT ALLOWS SOLID WASTE COLLECTION VEHICLES ACCESS TO BIN ENCLOSURES. SITES SHALL BE DESIGNED SO COLLECTION VEHICLES CAN SAFELY ACCESS AND LIFT A BIN WITHOUT OBSTRUCTIONS (GROUND LEVEL AND AERIAL OBSTRUCTIONS).
3. FOR THE SAFETY OF OTHERS, SOLID WASTE COLLECTION VEHICLES WILL NOT BACK UP MORE THAN 50 FEET AFTER SERVICING A BIN AND WILL NOT MAKE ANY TURNS WHILE BACKING.
4. NO AWNINGS OR BUILDING PROJECTIONS ALLOWED IN SOLID WASTE COLLECTION VEHICLE ROUTES. MIN. OVERHEAD CLEARANCE OF 14' IS REQUIRED IN DRIVE, 20' OVER BARREL SERVICE LOCATION AND 25' OVER BIN ENCLOSURE AREA FROM STEEL SAFETY POSTS BACK 50'. MINIMUM 20' GATE OPENING FOR AUTOMATED GATES.

SAFETY NOTE

BACKING UP MORE THAN 50' AFTER SERVICE TO A SOLID WASTE BIN IS PROHIBITED. THE 50' IS MEASURED FROM THE BACK OF THE SOLID WASTE COLLECTION VEHICLE. MAKE SURE THE AREA HAS THE PROPER TURNING RADIUS AND ACCESS AREA TO LEAVE SITE. THE VEHICLE IS APPROX. 31' LONG. SOLID WASTE COLLECTION VEHICLES WILL NOT TURN WHILE BACKING. A REQUIRED 50' CLEARANCE RECTANGLE DIMENSION IN FRONT OF EACH ENCLOSURE MUST BE SHOWN IN THE EXHIBIT.

MAX. BIN DEVIATION



5. ROUTES SHALL BE CLEAR OF ALL OBSTRUCTIONS (CURBS, TREES, WALLS, OVERHEAD WIRES, AND AWNINGS) TO PREVENT DAMAGE FROM THE COLLECTION VEHICLE. ALL BIN ENCLOSURES MUST BE A MINIMUM OF 10' AWAY FROM ALL TYPES OF GATES.
6. THE COLLECTION VEHICLE SHALL TRAVEL THROUGH A SITE ONCE WITHOUT BACKTRACKING.
7. BIN ENCLOSURES ARE TO BE ANGLED NO MORE THAN 30 DEGREES FROM THE CENTER LINE OF THE SOLID WASTE COLLECTION VEHICLE ROUTE.
8. BIN ENCLOSURES SHALL BE LOCATED AWAY FROM ENTRANCES AND EXITS OR BUSINESS DRIVE-THRU'S SO SOLID WASTE COLLECTION VEHICLE DOES NOT CREATE A SAFETY HAZARD BY BLOCKING IN-COMING OR OUT-GOING TRAFFIC.
9. STANDARDS FOR SINGLE AND DOUBLE-WIDE BIN ENCLOSURES ARE ADDRESSED IN TOG DETAILS TOG-07-02 AND TOG-07-03.
10. STANDARDS FOR BIN ENCLOSURE SCREEN WALLS AND GATES ARE ADDRESSED IN TOG DETAIL TOG-07-04.
- II. A MINIMUM 12' LONG PAVED (EITHER CONCRETE OR ASPHALT) AREA MUST BE LOCATED AT THE ENCLOSURE ENTRANCE. DUMPSTER MAY NOT BE LOCATED ON AN UNPAVED SURFACE (GRAVEL OR DIRT).

NOT TO SCALE

TOWN OF GARDNERVILLE

SECTION:

STANDARDS FOR SOLID WASTE AND
VEHICLE ACCESS

DATE: 7/24/2023

DWG: TOG-07-01

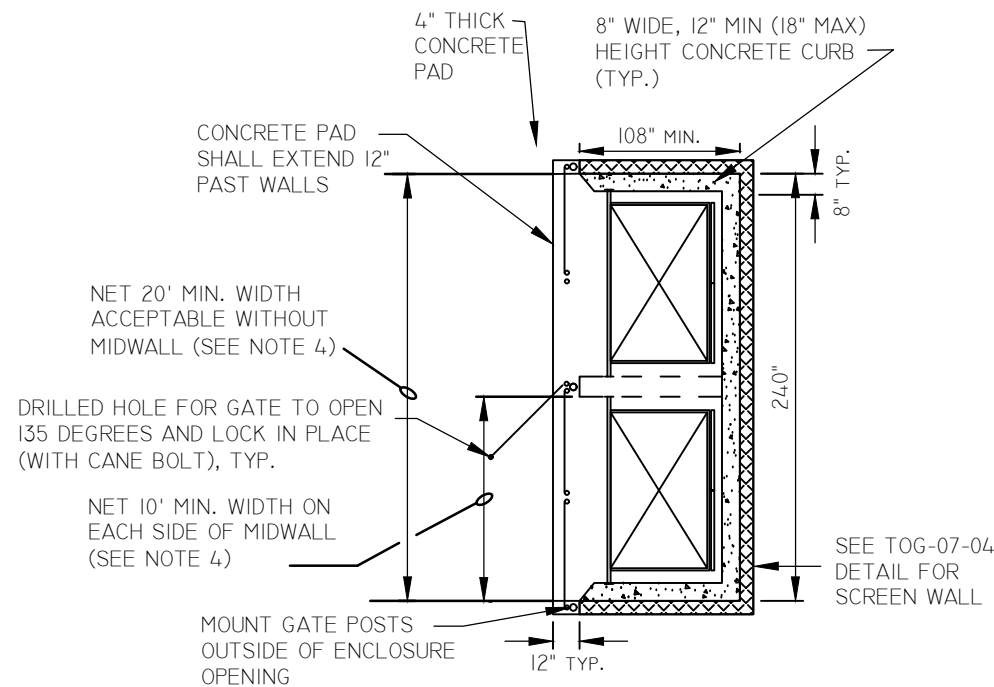


1. ALL COMMERCIAL PROPERTIES SHALL BE DESIGNED WITH ENCLOSURES TO ACCOMMODATE REFUSE FOR EVERY 20,000 SQUARE FEET OF BUILDING SPACE. THE ENCLOSURES CAN BE SET UP AS DOUBLES OR SINGLES TO MAXIMIZE THE USE OF THE PROPERTY.
2. THE NUMBER OF BIN ENCLOSURES NEEDED DEPENDS ON THE SIZE OF THE DEVELOPMENT. TYPICALLY, TOTAL VOLUME NEEDS CAN BE CALCULATED BASED ON ONE HALF-CUBIC YARD PER LIVING UNIT PER WEEK. FOR EXAMPLE, A DEVELOPMENT WITH 240 UNITS X .5 CUBIC YARDS = 120 CUBIC YARDS PER WEEK OR 15 DUMPSTERS (2 CUBIC YARDS) SERVICED FOUR TIMES PER WEEK (15 X 2 X 4 = 120 CUBIC YARDS).
3. SINGLE-WIDE 2 CUBIC YARD BIN ENCLOSURES SHALL HAVE A NET ENCLOSURE OPENING OF 10 FEET.
4. DOUBLE-WIDE 2 CUBIC YARD BIN ENCLOSURES SHALL HAVE A NET ENCLOSURE OPENING OF 20 FEET WITHOUT MIDWALLS. ALTHOUGH NOT PREFERRED, DOUBLE WIDE BIN ENCLOSURES CAN BE DESIGNED WITH MIDWALLS WITH A NET ENCLOSURE OPENING OF 10 FEET ON EACH SIDE OF MIDWALL.
5. GATES, HINGES, & MOUNTING HARDWARE SHALL BE INSTALLED SO THERE IS A MIN. 6 FOOT DEPTH CREATED WITHIN EACH ENCLOSURE.
6. GATES, HINGES AND MOUNTING HARDWARE SHALL NOT INTRUDE UPON MINIMUM NET ENCLOSURE OPENING SO THERE IS A MINIMUM 10' WIDTH WITHIN EACH ENCLOSURE. DOUBLE ENCLOSURE GATES MUST BE ABLE TO OPEN SIMULTANEOUSLY.
7. GATES ARE REQUIRED FOR ALL INSTALLATIONS. GATES SHALL BE MOUNTED ON METAL POSTS IMBEDDED IN CONCRETE AT CORNERS, NOT ATTACHED TO CORNERS. METAL FRAMED WITH A VIEW OBSTRUCTING GATE. CHAINLINK WITH SLATS, WOOD, OR METAL ARE ACCEPTABLE GATE MATERIALS. GATES SHALL OPEN A MINIMUM OF 135 DEGREES AND MUST LOCK IN BOTH THE OPEN AND CLOSED POSITION WITH A CANE BOLT OR SIMILAR MECHANISM. SEE TOG-07-04 FOR ADDITIONAL GATE DETAILS.
8. SURFACE - CONCRETE LEVEL: CONCRETE MINIMUM THICKNESS OF 4" ON 4" AGGREGATE BASE. SURROUNDING PAVED AREA SHALL BE LEVEL WITH ENCLOSURE.
9. 8" WIDE CONCRETE CURB STOPS (MINIMUM 12" TALL, MAXIMUM 18" TALL) TO PREVENT DUMPSTER FROM HITTING WALLS WHEN MOVING IN AND OUT SHALL BE PROVIDED.
10. SLOPE FROM THE FRONT OF THE TRASH ENCLOSURE SHALL BE A MINIMUM OF 2% AND MAXIMUM OF 4%.
11. ANY REQUIRED DRAINAGE SHALL NOT INTERFERE WITH MOVEMENT OF THE DUMPSTER.
12. CLEAR ACCESS EQUAL TO THE SIZE OF THE ENCLOSURE, BUT NOT LESS, THAT 10'X10' MUST BE MAINTAINED IN FRONT OF THE ENCLOSURE AT ALL TIMES.
13. ENCLOSURES ARE FOR THE EXPRESS USE OF CONTAINING DUMPSTERS, NO OTHER USES ARE PERMITTED.

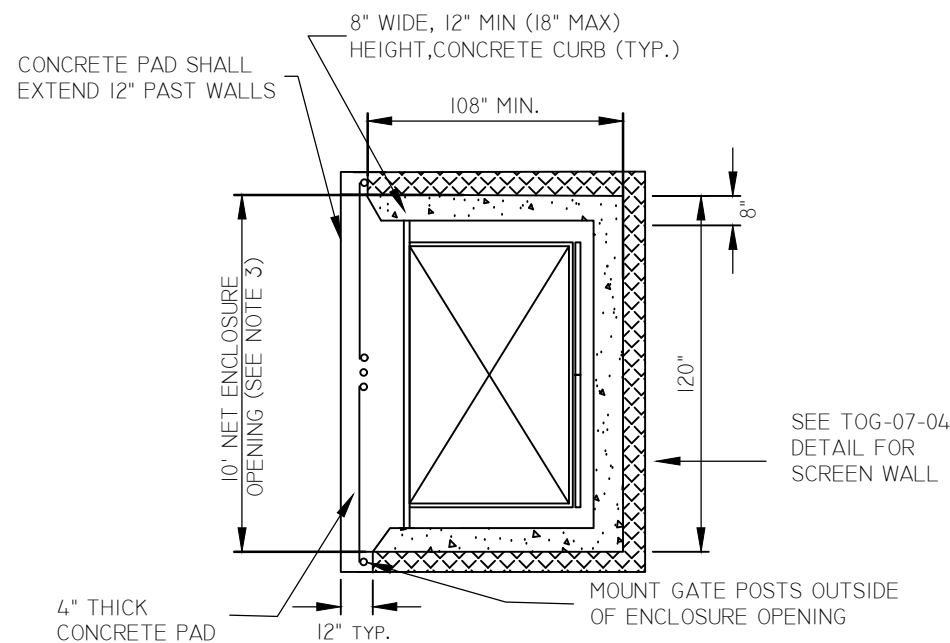
-
- 8" WIDE, 12" MIN (18" MAX) HEIGHT CONCRETE CURB (TYP.)
- 4" THICK CONCRETE PAD
- CONCRETE PAD SHALL EXTEND 12" PAST WALLS
- 72" MIN.
- 8" TYP.
- 240"
- NET 20' MIN. WIDTH ACCEPTABLE WITHOUT MIDWALL (SEE NOTE 4)
- DRILLED HOLE FOR GATE TO OPEN 135 DEGREES AND LOCK IN PLACE (WITH CANE BOLT), TYP.
- NET 10' MIN. WIDTH ON EACH SIDE OF MIDWALL (SEE NOTE 4)
- MOUNT GATE POSTS OUTSIDE OF ENCLOSURE OPENING
- 12" TYP.
- SEE TOG-07-04 DETAIL FOR SCREEN WALL



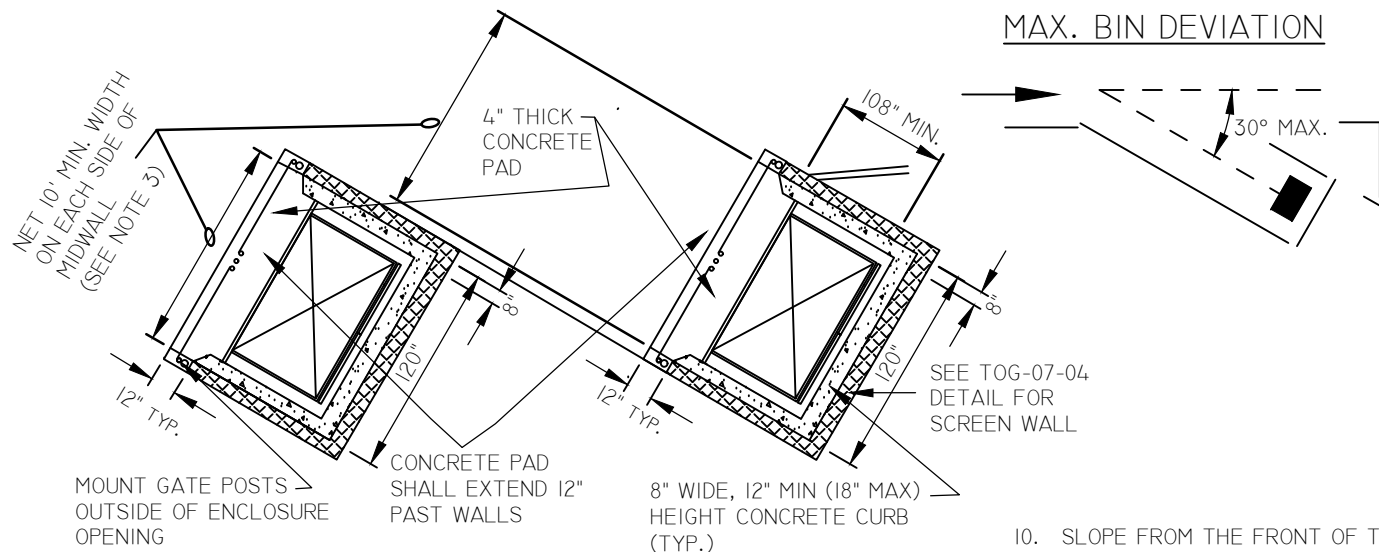
	TOWN OF GARDNERVILLE		SECTION:
	2 CUBIC YARD BIN ENCLOSURE DETAILS		DATE: 7/24/2023
			DWG: TOG-07-02



DOUBLE-WIDE 4 CUBIC YARD BIN ENCLOSURE CONFIGURATIONS



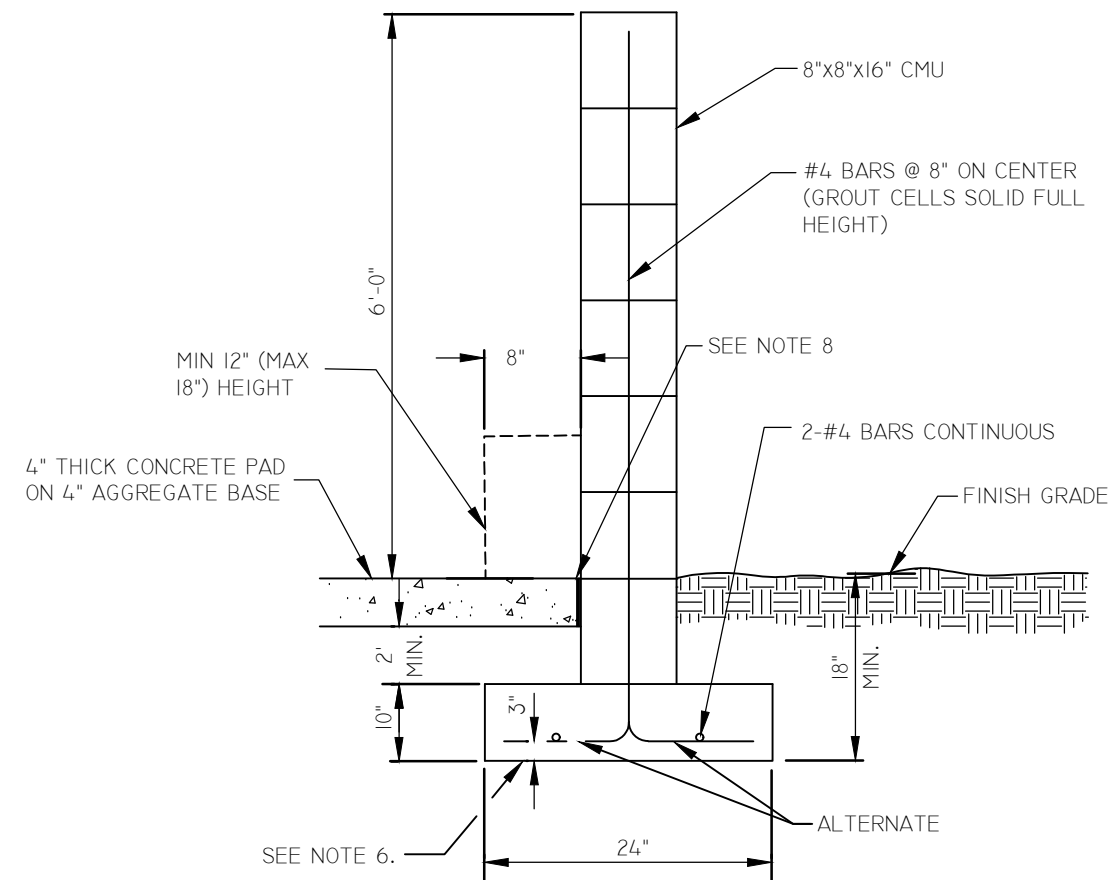
SINGLE-WIDE 4 CUBIC YARD BIN ENCLOSURE CONFIGURATIONS



NOTES:

1. ALL COMMERCIAL PROPERTIES SHALL BE DESIGNED WITH ENCLOSURES TO ACCOMMODATE REFUSE FOR EVERY 20,000 SQUARE FEET OF BUILDING SPACE. THE ENCLOSURES CAN BE SET UP AS DOUBLES OR SINGLES TO MAXIMIZE THE USE OF THE PROPERTY.
2. THE NUMBER OF BIN ENCLOSURES NEEDED DEPENDS ON THE SIZE OF THE DEVELOPMENT. TYPICALLY, TOTAL VOLUME NEEDS CAN BE CALCULATED BASED ON ONE HALF-CUBIC YARD PER LIVING UNIT PER WEEK. FOR EXAMPLE, A DEVELOPMENT WITH 240 UNITS X .5 CUBIC YARDS = 120 CUBIC YARDS PER WEEK OR 10 DUMPSTERS (4 CUBIC YARDS) SERVICED THREE TIMES PER WEEK (10 X 4 X 3 = 120 CUBIC YARDS).
3. SINGLE-WIDE 4 CUBIC YARD BIN ENCLOSURES SHALL HAVE A NET ENCLOSURE OPENING OF 10 FEET.
4. DOUBLE-WIDE 4 CUBIC YARD BIN ENCLOSURES SHALL HAVE A NET ENCLOSURE OPENING OF 20 FEET WITHOUT MIDWALLS. ALTHOUGH NOT PREFERRED, DOUBLE WIDE BIN ENCLOSURES CAN BE DESIGNED WITH MIDWALLS WITH A NET ENCLOSURE OPENING OF 10 FEET ON EACH SIDE OF MIDWALL.
5. GATES, HINGES, & MOUNTING HARDWARE SHALL BE INSTALLED SO THERE IS A MIN. 9 FOOT DEPTH CREATED WITHIN EACH ENCLOSURE.
6. GATES, HINGES AND MOUNTING HARDWARE SHALL NOT INTRUDE UPON MINIMUM NET ENCLOSURE OPENING SO THERE IS A MINIMUM 10' WIDTH WITHIN EACH ENCLOSURE. DOUBLE ENCLOSURE GATES MUST BE ABLE TO OPEN SIMULTANEOUSLY.
7. GATES ARE REQUIRED FOR ALL INSTALLATIONS. GATES SHALL BE MOUNTED ON METAL POSTS IMBEDDED IN CONCRETE AT CORNERS, NOT ATTACHED TO CORNERS. METAL FRAMED WITH A VIEW OBSTRUCTING GATE. CHAINLINK WITH SLATS, WOOD, OR METAL ARE ACCEPTABLE GATE MATERIALS. GATES SHALL OPEN A MINIMUM OF 135 DEGREES AND MUST LOCK IN BOTH THE OPEN AND CLOSED POSITION WITH A CANE BOLT OR SIMILAR MECHANISM. SEE TOG-07-04 FOR ADDITIONAL GATE DETAILS.
8. SURFACE - CONCRETE LEVEL: CONCRETE MINIMUM THICKNESS OF 4" ON 4" AGGREGATE BASE. SURROUNDING PAVED AREA SHALL BE LEVEL WITH ENCLOSURE.
9. 8" WIDE CONCRETE CURB STOPS (MIN 12" TALL, MAX 18" TALL) TO PREVENT DUMPSTER FROM HITTING WALLS WHEN MOVING IN AND OUT SHALL BE PROVIDED.
10. SLOPE FROM THE FRONT OF THE TRASH ENCLOSURE SHALL BE A MINIMUM OF 2% AND MAXIMUM OF 4%.
11. ANY REQUIRED DRAINAGE SHALL NOT INTERFERE WITH MOVEMENT OF THE DUMPSTER.
12. CLEAR ACCESS EQUAL TO THE SIZE OF THE ENCLOSURE, BUT NOT LESS THAT 10'X10' MUST BE MAINTAINED IN FRONT OF THE ENCLOSURE AT ALL TIMES.
13. ENCLOSURES ARE FOR THE EXPRESS USE OF CONTAINING DUMPSTERS, NO OTHER USES ARE PERMITTED.
14. BIN ENCLOSURES ARE TO BE ANGLED NO MORE THAN 30 DEGREES FROM THE CENTER LINE OF THE SOLID WASTE COLLECTION VEHICLE ROUTE.
15. BIN ENCLOSURES TO BE A MINIMUM OF 3 FEET FROM ANY NON-COMBUSTIBLE PLANNED OR EXISTING STRUCTURE AT ITS CLOSEST POINT; 5 FEET FROM ANY COMBUSTIBLE PLANNED OR EXISTING STRUCTURE AT ITS CLOSEST POINT (PER UNIFORM FIRE CODE 1103.2.2).
16. RESTAURANTS MUST PROVIDE A SEPARATE ENCLOSED AREA TO ACCOMMODATE THEIR GREASE TRAP. THIS DESIGNATED AREA MUST NOT INTERFERE WITH THE TRASH COLLECTION.
17. SOLID WASTE ENCLOSURES MAY INCLUDE WATER CONNECTIONS & DRAINS TO FACILITATE CLEANING OF DUMPSTERS. THESE SHOULD BE LOCATED TO NOT IMPEDE THE ENCLOSURE OPENING (AND GATING IF REQUIRED). ADDITIONAL ITEMS SUCH AS LANDSCAPING CONTROL BOXES AND LIGHTING MAY BE POSITIONED ON THE OUTSIDE OF THE ENCLOSURE WALLS. SEE DOUGLAS COUNTY STANDARD DETAIL C09 FOR DUMPSTER PAD DRAIN SYSTEM.
18. TREE PLANTING SHOULD NOT TAKE PLACE WITHIN TEN (10) FEET OF THE BIN ENCLOSURE AND SHOULD BE SPACED SO AS NOT TO CREATE AN AERIAL OBSTRUCTION FOR THE BIN DUMPING AT THE FINAL FULL GROWTH DIMENSIONS.
19. TRASH ENCLOSURES FOR COMMERCIAL PROPERTIES MUST BE EVENLY SPACED FOR TENANT ACCESS. TRASH ENCLOSURES FOR APARTMENT/CONDO/TOWN-HOME/ MULTI-FAMILY COMPLEXES MUST BE EVENLY SPACED FOR RESIDENTIAL ACCESS.
20. DEVIATIONS TO THE STANDARD TRASH ENCLOSURE DIMENSIONS AND LAYOUT MAY BE APPROVED ON A CASE-BY-CASE BASIS IF DESIGNED BY A REGISTERED PROFESSIONAL.

NOT TO SCALE



6-FOOT MASONRY SCREEN WALL

NOTES

1. TRASH AND RECYCLING BIN AREA SHALL BE SCREENED WITH A SIX FOOT (6') MASONRY WALL PER DETAIL TO THE LEFT.
2. BIN ENCLOSURE TO BE A MINIMUM OF 3 FEET FROM ANY NON-COMBUSTIBLE PLANNED OR EXISTING STRUCTURE AT ITS CLOSEST POINT, AND 5 FEET FROM ANY COMBUSTIBLE PLANNED OR EXISTING STRUCTURE AT ITS CLOSEST POINT (PER UNIFORM FIRE CODE II03.2.2).
3. GATES SHALL BE INSTALLED SO THERE IS A NET BIN ENCLOSURE OPENING OF 10 FEET FOR BOTH THE 2 CUBIC YARD BIN AND 4 CUBIC YARD BIN. GATES, HINGES, AND MOUNTING HARDWARE SHALL NOT INTRUDE UPON MINIMUM NET ENCLOSURE OPENING.
4. GATES, HINGES, SAFETY POSTS, AND MOUNTING HARDWARE SHALL BE INSTALLED SO THERE IS A MINIMUM 6 FOOT DEPTH FOR 2 CUBIC YARD BIN ENCLOSURE AND MINIMUM 9 FOOT DEPTH FOR 4 CUBIC YARD BIN CREATED WITHIN EACH ENCLOSURE.
5. EACH ENCLOSURE GATE SHALL HAVE CANE BOLTS INSTALLED AND HOLES DRILLED IN THE CONCRETE AT BOTH THE OPEN AND CLOSED POSITIONS TO PREVENT GATES FROM CLOSING INTO THE COLLECTION VEHICLE.
6. USE 4000 PSI CONCRETE AS PER SECTION 337 OF THE SSPWC.
7. STEEL REINFORCEMENT SHALL BE GRADE 40.
8. EXPANSION JOINT FILLER SHALL BE 1/2" BITUMINOUS TYPE PREFORMED EXPANSION JOINT FILLER ASTM D-1751.
9. EXTERIOR FINISH OF 6 FOOT MASONRY SCREEN WALLS SHALL BE COORDINATED ARCHITECTURALLY WITH PRIMARY BUILDING FINISHES.
10. SOIL BELOW THE WALL FOOTER AND SHALL BE COMPACTED TO A DEPTH OF 6 INCHES AND TO A MINIMUM DRY DENSITY OF 90% IN ACCORDANCE WITH ASTM D-2922 AND D-3017, AFTER ADJUSTMENT FOR ROCK CORRECTION.
11. STANDARDS FOR SOLID WASTE VEHICLE ACCESS ARE ADDRESSED IN TOG-07-01 DETAILS.
12. STANDARDS FOR SINGLE & DOUBLE ENCLOSURES ARE ADDRESSED IN TOG-07-02 & TOG-07-03 DETAILS.

NOT TO SCALE

SECTION:

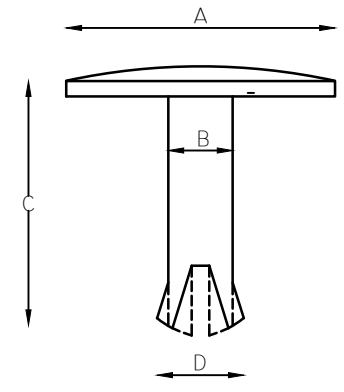
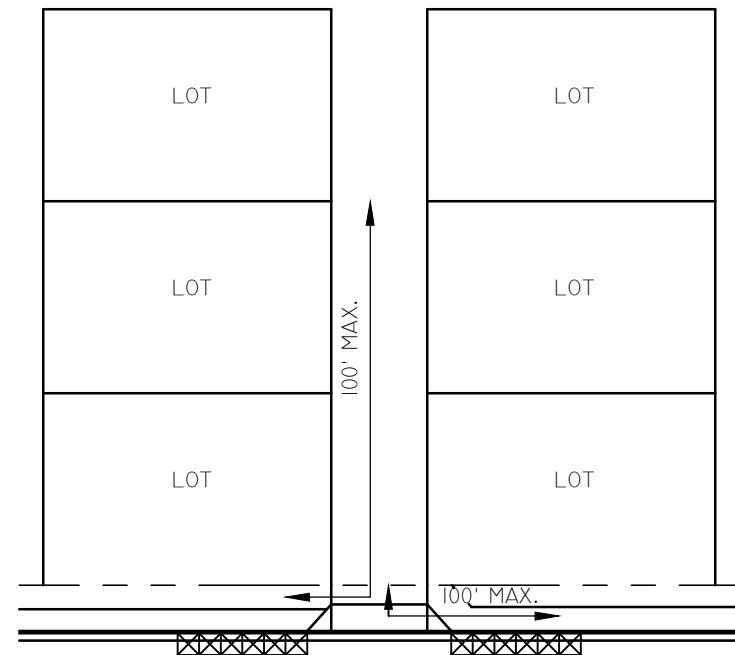
DATE: 7/24/2023

DWG: TOG-07-04

TOWN OF GARDNERVILLE

BIN ENCLOSURE SCREEN WALL AND GATE STANDARDS





A = 3.5" (89 MM)
 B = 0.72" (18 MM)
 C = 3.3125" (84 MM)
 D = 0.875" (22 MM)
 CAP THICKNESS = 3/16"
 MATERIAL: BRASS OR BRONZE

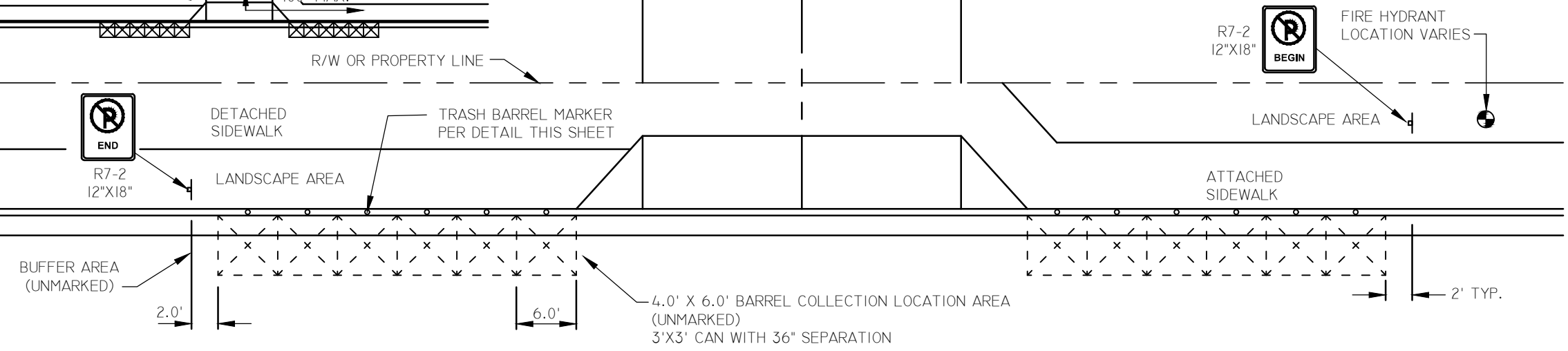



NOTE: THIS DETAIL APPLIES TO SMALL LOT / MULTI-LOT WITH PRIVATE DRIVE BARREL COLLECTION ONLY.

TRASH BARREL MARKER

NOTES:

1. 2 BARREL COLLECTION LOCATIONS PER RESIDENTIAL UNIT ARE REQUIRED, SPLIT BETWEEN THE ALLEY DRIVEWAY, I.E. 6 RESIDENTIAL HOMES WOULD REQUIRE 12 PADS, THESE CAN BE 6 PADS EACH SIDE OF THE DRIVEWAY. ADDITIONAL UNITS WILL REQUIRE ADDITIONAL PADS.
2. LOCATION OF NO PARKING SIGN MAY NEED TO BE ADJUSTED TO ACCOUNT FOR ADJACENT FIRE HYDRANTS (15' PARKING RESTRICTION EACH SIDE), MAILBOXES, INTERSECTIONS OR OTHER OBSTRUCTIONS.
3. IF PRIVATE STREET IS LESS THAN 25' WIDE, SOLID WASTE CONCRETE PADS SHALL BE PLACED BEHIND BACK OF CURB.



SECTION:	TOWN OF GARDNERVILLE	
	BARREL COLLECTION PADS AT LOT/MULTI-LOT WITH PRIVATE DRIVES & TRASH BARREL MARKER	
		
DATE:	7/24/2023	
DWG:	TOG-07-05	