

# WELCOME

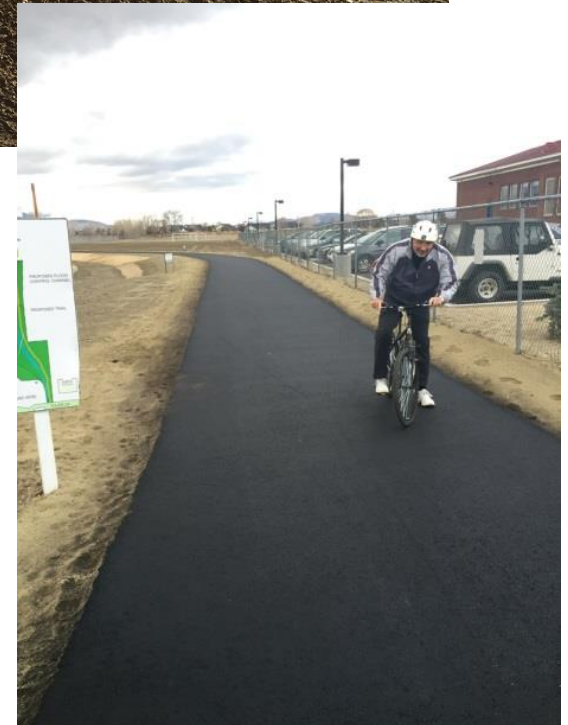
TO THE  
GARDNERVILLE TOWN  
BOARD MEETING  
February 6, 2016



# January 2015 – January 2016 Projects

Recap of the year

# Hellwinkel Channel and Pedestrian Path





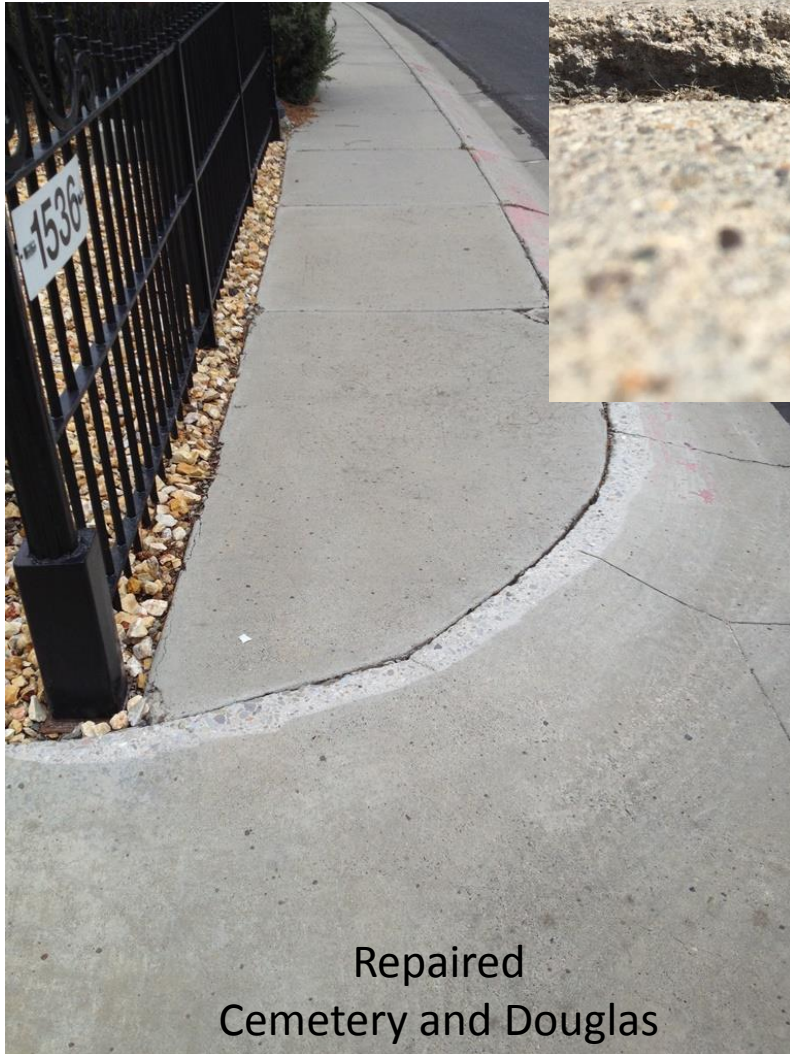
# Boy Scout Project

Toler + Harvest Rehab





# Trip Hazard Remediation





# Arbor Day





# Boy Scout Project

Arbor Garden Joint Project





# Boy Scout Project

Town Office Rehab





# Gardnerville Station - ongoing

Removal of leaking fuel lines



# Gardnerville Station - ongoing

Removal of leaking fuel lines

## Town Board Approved Color Concept



LIGHT VERSION 2

PAINT  
COLORS

ROOF: 3.533  
VICTORIAN GARDEN  
BRICK: 2.427  
WHITE WINGED DOVE

FASCIA: 10A10-S  
BLACKJACK  
BRICK: CSP-3.330  
CANYON ROCK

WALL UNDER ROOF: 3.478  
HORIZON



# Gardnerville Station

Removal of Fuel Tanks



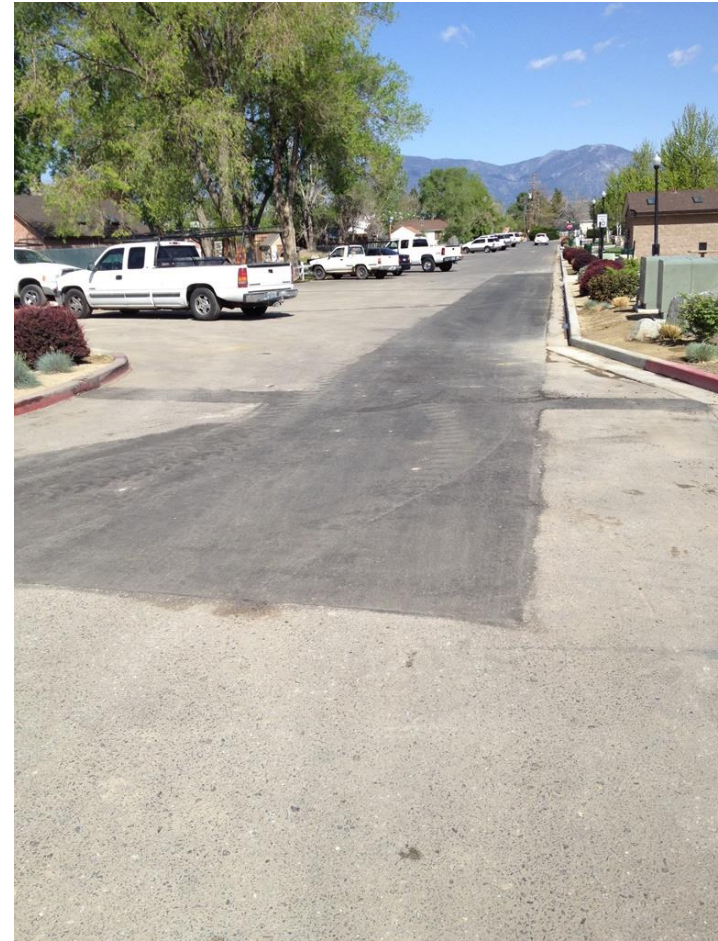
# Carpet in the Town Office



Business as usual  
during construction.



# Street Cut on Courthouse Alley in Heritage Park



Street cut to install electric to the Overland. No cost to the Town except future maintenance.



# Virginia Ranch Road Extension





# Wind Event



2/6/2015

# Irrigation Box Cleaned Near Kings Lane on US 395



2/11/2015



# Boy Scout Project

## Heritage Park Garden Bridge





# Martin Slough Maintenance and Repairs



January 2015



# Haybourne Ditch



No cost to the town now. Future Maintenance Demand Expected.

# Town Events:

Movies in the Park – June

Continue 4 movies per year

Great Race & Car Show – June 19th

Freedom 5k – July 4th Looking into alternate route using the new trail

July 4<sup>th</sup> – Sponsoring CV POPS in the Park

Splash Dogs August 19-21

Christmas Kickoff – December 3<sup>rd</sup>

Continue light show? Or all on all off lights on pavilion?

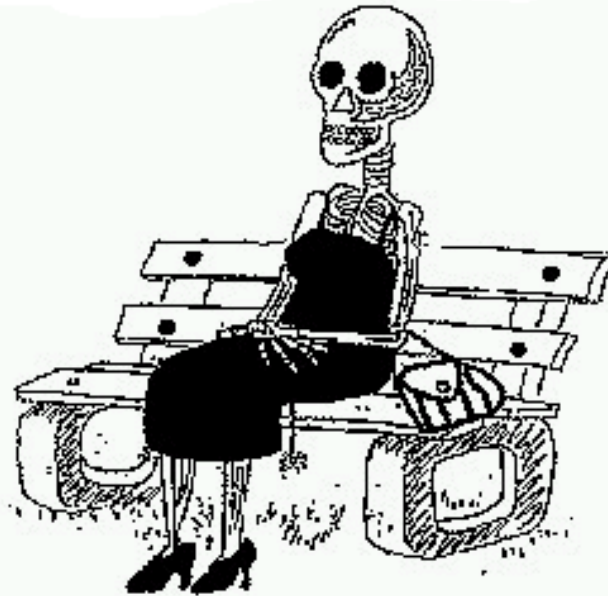
Continue Fireworks?

Continue serving Cobbler and Hot Drinks



# PENDING Town projects

**Waiting..**



# State Lands LWCF Trail Grant

- Trails Grant
- Ordering 2 shade structures
- 10 trash cans
- 8 benches + replacement parts for Heritage park benches
- Three picnic tables
- Revised signage for the Martin slough trail system



# Current Projects:

1. Village Motel BLA, Appraisal, Title report, map with easements.
2. Hussman Storm drain replacement
3. 395 crosswalk improvements 60% plans in your packet
4. Concrete work – town wide
  - Path concrete @ Toler
  - Core and install bollards at Carrick
  - 395 Oxoby ramp, Village, and others based on trip hazard study
  - large section C&G and sidewalk on Service Dr.
5. LWCF – Grant for Trail amenities and concrete steps @ Martin Slough pond. Purchase benches, picnic tables and two shelter covers with picnic tables, trash bins, and Revised pond signage.
6. Hellwinkle Barns Structural Design

# Cont'd Current Projects:

7. Industrial Way and Southgate entrances replace pavement.  
Cape seal streets
8. Service Drive ac pavement failure, reconstruct and patches.  
Crack repair - Chichester
9. Kingslane light, channel and entrance improvements – NV  
Energy for new pedestal
10. North Hampton Street Light – NV Energy to add one light at  
Waterloo intersection.
11. Plans for CMU wall at Maintenance yard. Create Green waste /  
limb drop-off area. Possibly a recycling station from DDI,  
Create a bin for the cinders.
12. Mill Street improvements North side gutter, Douglas ADA Ramp.
13. Storm drain and trail re alignment at End of Slaughterhouse  
Lane.
14. Gardnerville Station – Clean up work
15. End caps on Waterloo Lane.



# 2016/2017 Projects:

- Sidewalk and ADA repairs – Continue with repairing issues identified in the study
- Valley Vision Bank
- Gardnerville Station
- Mill Street Improvements
- Micro Surface Sunset Park
- Storm drain replace – Centertown Apart.
- Toler to Raley's Sidewalk
- Hellwinkle barn and Shop

# Other projects to consider

- Purchase property 3.35 acres Gilman & Ezell (south east)
  - Fronton
  - Office
  - Shop
- If Church builds (pending application and approval) on 5.8 acres next to HPG-
  - Town could purchase remainder parcel for parking lot for Park events
- Clean out Martin Slough channel South of Ponds
- Irrigation Structure improvements at Kingslane
- Gateway relocation South of Town
- Path signage and landscaping and amenities
- Community Orchard on The Ranch Open Space
- Need additional space at Maintenance Yard
- Heritage park – replace brick with stamped and colored ac
- Bridge at Hellwinkel Barns and path extension
- Bridges along the Martin Slough Trail from Gilman to Zerolene – Possibly partnering with Minden to extend project from Gilman to Lucerne.
- Bike rack program with Brands



# Town Fleet

- Office truck 611 would turn town truck into a ½ ton with tool boxes or utility bed. <Geoff Truck>
- Buy SUV for office?
  - Could ride to conferences or town tours in Explorer
- Additional Fleet Utility truck for staff.
  - 602 flat bed
  - 603 ½ ton utility
  - 607 1 ton contractors bed & plow
  - 610 1 ton large utility bed
  - 616 dump truck
  - 618 bucket truck <new> - Task Specific

# Town Admin Vehicle

SUV

or

Truck



Ford Explorer 4x4 \$29,000



Ford Escape FWD \$25,000



4x4

2016 Chevrolet ¾ ton Extended \$27,000

2016 Chevrolet 1 ton Crew: \$30,000

2016 Ford Crew F250 \$31,000

Dodge 2500 Crew \$25,000



# Town equipment replacement/addition

- New Lawn Tractor for Grading, Aerating / Thatching, with turf tires
- Replace Gator
- Replace Bobcat